

Rotating beacons

BGA850 • MAJOR ROTATING BEACON



The BGA850 is a rotating light for major lighthouse systems, achieving ranges of 28 n.m. with 2,500,000 Cd of effective intensity.

The optical equipment uses acrylic moulded lenses of high accuracy and optical efficiency of 360 mm focal distance and 720 mm height. Low energy consumption allows operation from a low voltage DC photovoltaic solar system.

The installation is very simple and safe, by using the MGE150, electronic gearless double motor pedestal.

Features

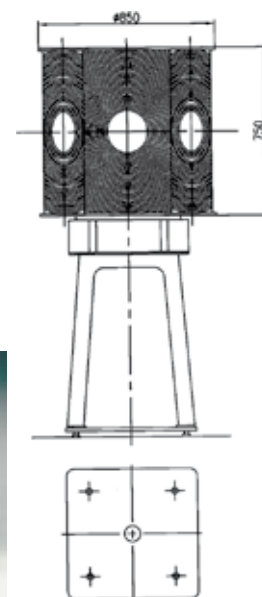
- 720 mm height x 360 mm focal-distance acrylic moulded lenses.
- MGE150 electronic gearless & brushless motor, with only one moving assembly (shaft, rotor and turntable).
- The MGE150 is a double motor. It forms two independent units for increasing safety.
- Wide choice of lens configurations.
- CLC series lampchanger.
- Standard CMA130 and CMB200 Control Units control the light system operation.
- Very simple and safe installation, low maintenance.
- High reliability and availability, proven by field experience over many years.
- The power supply for the BGA850 rotating beacons can be either AC or low voltage DC.
- Totally suited for solar power operation in remote lighthouses.
- Status and alarms of motor, lamps and batteries ready for monitoring and remote control, by opto-isolated signals.

Range of lamps

- Prefocused halogen lamps: 12 V / 100 W and 24 V / 150 W.
- High-intensity metal halide discharge lamps, from 35 W to 700 W, 220 V AC.
- Xenon discharge lamps, 12 V DC 6,000 life hours.

Technical specifications

- Luminous nominal range of 28 n.m. ($T = 0.74$)
- 360 mm focal distance acrylic moulded lenses, 720 mm high.
- Hexagonal and octagonal standard lens configurations. Other lens arrangements and blanking panels available.
- Light colours in clear, red, green and yellow (according to IALA Recommendations).
- Possibility of sector lights in different colours.
- MGE150 gearless and brushless double rotating motor-pedestal.
- Rotation speed: 0.66 to 6 rpm.
- Maximum lamp power: 1,000 W.
- Voltage supply: 12 or 24 V DC, or any AC voltage.
- Power Consumption: 15 W more consumption of lamp.
- Optional UCA 130 remote alarm unit.
- Ready to be connected to Remote Monitoring & Control Systems.
- Electromagnetic Compatibility CE



| Equipment | Net weight | Packing | Dimensions |
|-----------|------------|---------|---|
| BGA850 | 190 kg | Wooden | 100 x 100 x 130 cm (1.3 m ³) 221 kg |
| CMA130 | 34 kg | Wooden | 80 x 60 x 50 cm (0.24 m ³) 38 kg |
| CMB200 | 4.6 kg | Wooden | 30 x 40 x 22 cm (0.026 m ³) 11 kg |

| BGA850 | Fixed intensity (Cd) | Hexagonal array | | | | | | | | |
|------------------|----------------------|--------------------------|-----------|-----------|-----------|-----------|-----------|---------|---------|---------|
| | | Effective intensity (Cd) | | | | | | | | |
| Lamps | | Rotation speed (rpm) | | | | | | | | |
| | | 0.66 | 1 | 1.5 | 2 | 2.5 | 3 | 4 | 5 | 6 |
| Hal 100 W / 12 V | 810.000 | 429.025 | 347.143 | 270.000 | 220.909 | 186.923 | 162.000 | 127.895 | 105.652 | 90.000 |
| Hal 150 W / 24 V | 1.100.000 | 611.383 | 500.000 | 392.857 | 323.529 | 275.000 | 239.130 | 189.655 | 157.143 | 134.146 |
| HI 35 W / 220 V | 1.125.000 | 675.270 | 562.500 | 450.000 | 375.000 | 321.429 | 281.250 | 225.000 | 187.500 | 160.714 |
| HI 70 W / 220 V | 1.595.000 | 1.014.096 | 857.769 | 696.938 | 586.895 | 506.864 | 446.040 | 359.710 | 301.378 | 259.326 |
| HI 150 W / 220 V | 2.045.000 | 1.391.521 | 1.199.203 | 993.626 | 848.217 | 739.934 | 656.168 | 535.029 | 451.648 | 390.752 |
| HI 700 W / 220 V | 3.950.000 | 2.576.983 | 2.194.444 | 1.795.455 | 1.519.231 | 1.316.667 | 1.161.765 | 940.476 | 790.000 | 681.034 |

| BGA850 | Fixed intensity (Cd) | Octogonal array | | | | | | | | |
|------------------|----------------------|--------------------------|-----------|-----------|-----------|-----------|---------|---------|---------|---------|
| | | Effective intensity (Cd) | | | | | | | | |
| Lamps | | Rotation speed (rpm) | | | | | | | | |
| | | 0.66 | 1 | 1.5 | 2 | 2.5 | 3 | 4 | 5 | 6 |
| Hal 100 W / 12 V | 650.000 | 344.280 | 278.571 | 216.667 | 177.273 | 150.000 | 130.000 | 102.632 | 84.783 | 72.222 |
| Hal 150 W / 24 V | 915.000 | 508.559 | 415.909 | 326.786 | 269.118 | 228.750 | 198.913 | 157.759 | 130.714 | 111.585 |
| HI 35 W / 220 V | 955.000 | 573.229 | 477.500 | 382.000 | 318.333 | 272.857 | 238.750 | 191.000 | 159.167 | 136.429 |
| HI 70 W / 220 V | 1.225.000 | 779.192 | 659.077 | 535.500 | 450.947 | 389.455 | 342.720 | 276.387 | 231.568 | 199.256 |
| HI 150 W / 220 V | 1.575.000 | 1.071.343 | 923.276 | 765.000 | 653.049 | 569.681 | 505.189 | 411.923 | 347.727 | 300.843 |
| HI 700 W / 220 V | 3.380.000 | 2.212.042 | 1.877.778 | 1.536.364 | 1.300.000 | 1.126.667 | 994.118 | 804.762 | 676.000 | 582.759 |

These values are for white colour and exclude lanternhouse losses.