

Buoys

SERIE BCA / BFA • STEEL LIGHT BUOYS



BCA & BFA buoy series offer the typical advantages of big steel buoys: good stability, combined with toughness and resistance. BCA tail-tube buoys exhibit the maximum stability even in the most severe open-sea conditions.

BFA skirt-keel buoys exhibit easier handling, as they can stand upright during the maintenance operations onto buoy tender decks, and during assembly and storage in warehouses and quays. During periods of low springs or tide, they can also remain vertically up.

Features

- Robust buoy body including top and bottom dished ends of 8 to 10 mm steel plate thickness, pressure tested.
- Four legged hot-dip galvanized steel profile superstructure with back rest ring.
- Easy access, ventilated central pocket for battery storage.
- Cast-iron ballast weights.
- Equipped with three lifting eyes and two mooring eyes.
- All fixing bolts of stainless steel with special anti-creep locknuts.
- Standard circular marine-grade rubber fender.
- Supplied with passive radar reflector.
- Standard top mark (optional wing-type daymark) according to IALA Buoyage System.
- Painted with one first coat of phosphate primer and two or three finishing coats of marine paint.
- Colour according to IALA Buoyage System.
- Wide range of marine lanterns.
- Ready to install solar power systems or primary batteries.
- Appropriate mooring set for any local condition.
- Standard diameters up to 3 m and focal heights up to 6 m.
- Other buoy sizes can be supplied to meet special customer requirements.
- Optional: float core made from closed-cell polyethylene foam.

Design configuration

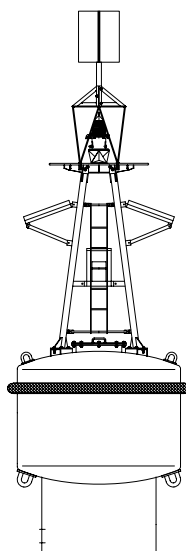
BCA steel tail-tube lightbuoys

Type of bouy	Diameter	Focal height	Net weight	Float volume	Ballast weights	Steel plate	Displacement	Diameter of recommended chain	Mooring capacity	Concrete sinker
BCA2250	2.2 m	5.0 m	2,800 kg	8.7 m ³	800 kg	8 mm	38 kg / cm	32 / 38 mm	2,200 kg	5,000 kg
BCA3060	3.0 m	6.0 m	4,000 kg	14.1 m ³	2,000 kg	10 mm	72 kg / cm	32 / 42 mm	3,400 kg	6,000 kg

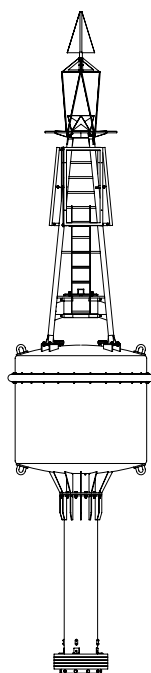
BFA steel skirt-keel lightbuoys

Type of bouy	Diameter	Focal height	Net weight	Float volume	Ballast weights	Steel plate	Displacement	Diameter of recommended chain	Mooring capacity	Concrete sinker
BFA2040	2.0 m	4.0 m	2,200 kg	6.7 m ³	800 kg	8 mm	32 kg / cm	32 / 38 mm	1,500 kg	3,000 kg
BFA3050	3.0 m	5.0 m	3,300 kg	11.1 m ³	1,500 kg	10 mm	72 kg / cm	32 / 42 mm	2,600 kg	5,000 kg

These data are orientative and may change according to different customer specifications.



BFA skirt-keel buoy



BCA tail-tube buoy

