

SYNC-GPS • GPS SYNCHRONIZER



The SYNC-GPS synchronizer is a equipment of synchronization of flashing lanterns using the timing signalisation UTC given by the GPS. By using an universal time reference, the synchronisation capacity is independent of the distance and spread all over the earth surface with GPS cover.

The equipment integrate an active antenna of high gain (24dB) which free the use of external antennas for most part of applications.

In case of the its location causes big extenuations to the GPS signal, the equipment has in option a coaxial connector for extern antenna.

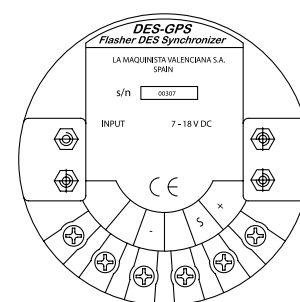
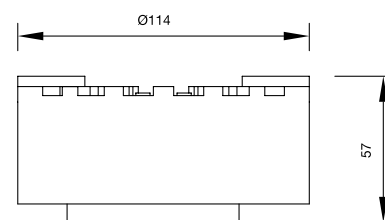
Features

- GPS receiver: 20 channels
- Synchronizer and its antenna integrated in the interior of the beacon.
- Uses GPS Technology.
- Low power consumption.
- Automatic configuration.
- Independent of flash character.
- Possibility of lantern synchronization or to sweeping.
- Synchronization independent of beacon distance.



Technical specifications

- Self diagnostic hardware and configuration via series SCI output (5V TTL) compatible RS232 with extern convertor (TTL-RS232 or TTL-USB).
- Electronic protection against excess of voltage, short-circuit and inverse-polarity.
- Main regulator commuted by high efficiency and micro-controller 8 bits and ultra-low energy consumption.
- Modulate GPS of 20 channels (12 in tracking mode) with protocol NMEA0183 v. 3.01 and precision of synchronization of 1 ppm (0,0001 %).
- Activate Antenna QHA (Quadrifilar Helical Antenna) of high gain (24dB and high immunity of désyntonisation).
- Optional use of an extern antenna through a connector MCX for feeder of 50Ω (RG58).
- Additional program for auto-diagnostic in procedure of maintenance.
- Full-duplex serial port at level TTL for intercommunication with PC.
- Degree of waterproofness IP-66.
- Electromagnetic compatibility CE
- Net weight: 0,65 kg.



| | |
|-------------------------------|--|
| Power supply | 7-18 V CC |
| Power consumption | < 15 mA average |
| Sleep | 0.4 mA |
| Activo | 65 mA |
| Receiver GPS | 20 channels |
| Antenna GPS | Antenna active 24 dB |
| Protocols | NMEA0183 v. 3.01 |
| Firmware | Stored in flash memory, updated via serial port. |
| Sync pulse | 1 ms Triggering raising edge |
| Antenna connector | MCX, 50 Ohm, female |
| Timing accuracy | ± 1 ms |
| Temperature range | -40 °C + 75 °C |
| Dimensions | 200 x 90 x 60 mm (W x H x D) |
| Weight | 0.55 kg |
| Watertightness degree | IP-66 |
| Electromagnetic compatibility | CE |
| Telecontrol | RS232 |